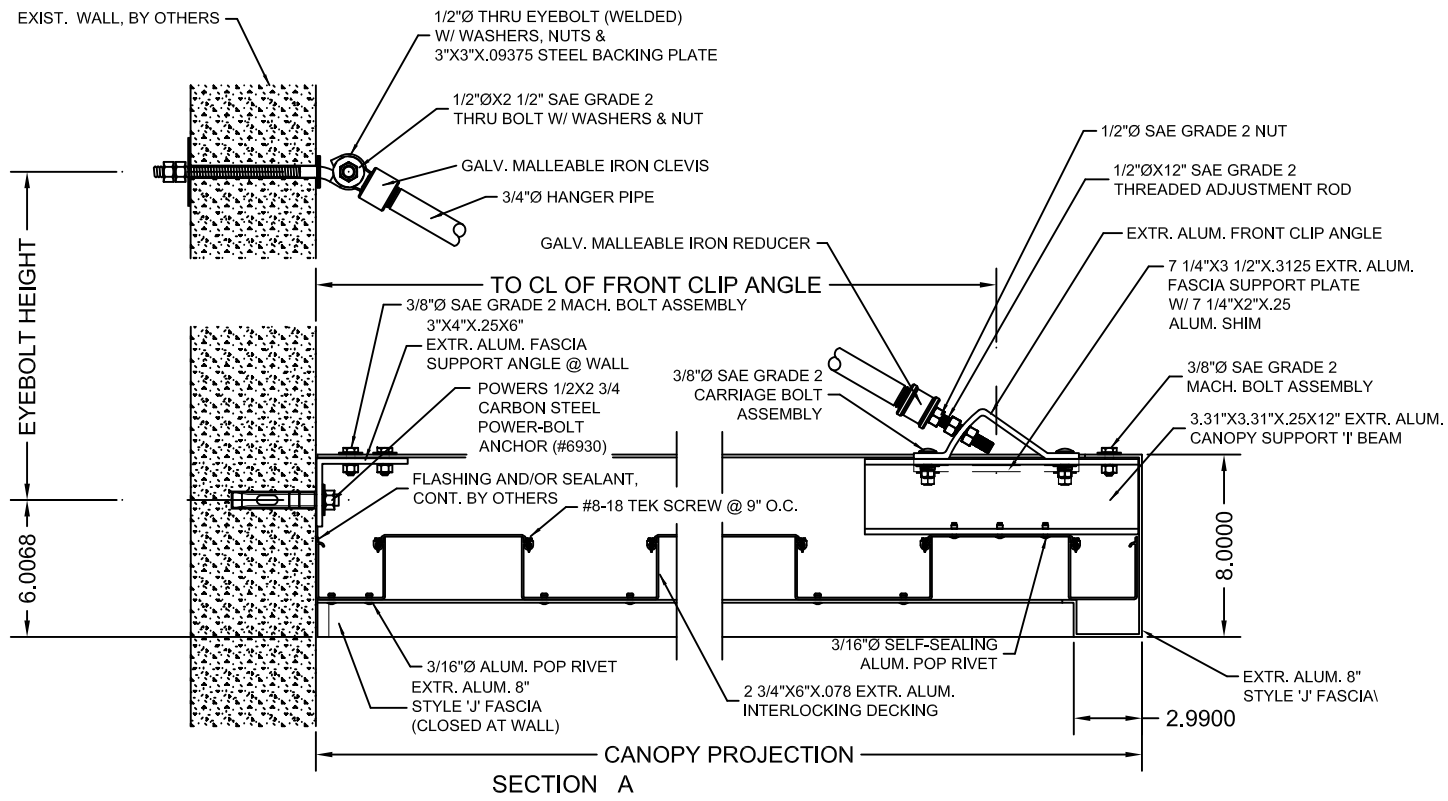


CANOPY PLAN

NOTES:
 FINISH SHALL BE BRONZE BAKED ENAMEL, WHITE BAKED ENAMEL OR CLEAR ANODIZED
 VERIFY ALL DIMENSIONS
 FLASHING & SEALANT, CONT. BY OTHERS
 ALL FASTENER HOLES NOT OTHERWISE NOTED TO BE FIELD DRILLED
 ALL FASTENERS NOT OTHERWISE NOTED ARE CADMIUM PLATED FERROUS OR ALUMINUM

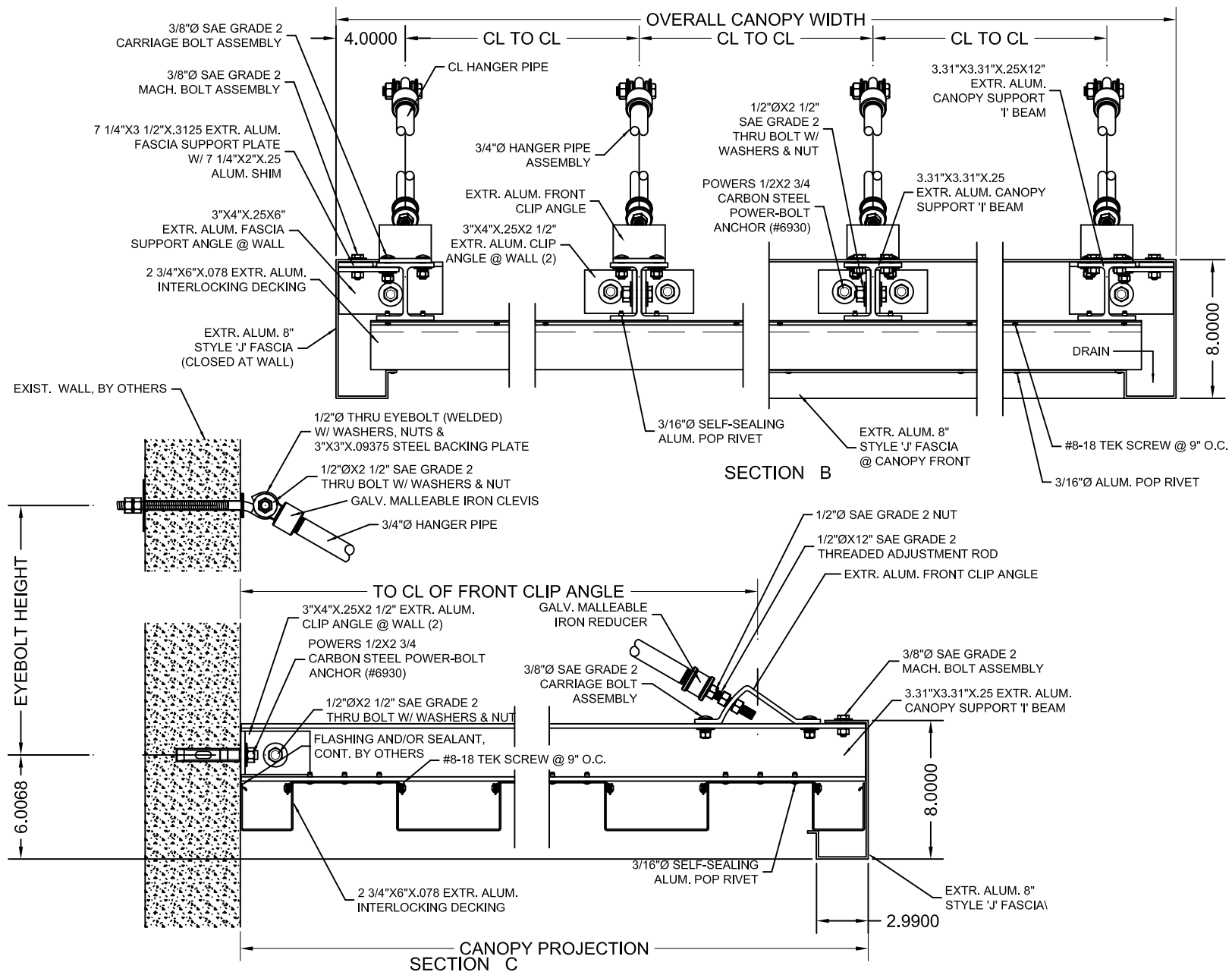


SECTION A

AMERICAN PRODUCTS, INC. (API)
 12157 W. LINEBAUGH AVENUE #335
 TAMPA, FL 33626
 CONTACT: KERRI BEALS
 PH (813) 925-0144
 WWW.AMERICANPROD.COM

Customer: API-IN HOUSE	Date: 6/12/2015
Assembly: SOFFIT CANOPY (WALL MOUNT)	Date:
Drawn By: L.B.	Sheet: 1 OF 2
Revision:	
Scale: N.T.S.	

API Recommends that this note appear with storefront elevations and section view details in your blueprints.
 Storefront and related materials provided by American Products, Inc. (API). No substitutions without written consent from store owner/
 Architect: API (813) 925-0144



AMERICAN PRODUCTS, INC. (API)
 12157 W. LINEBAUGH AVENUE #335
 TAMPA, FL 33626
 CONTACT: KERRI BEALS
 PH (813) 925-0144
 WWW.AMERICANPROD.COM

API
 AMERICAN PRODUCTS, INC.

Customer: API-IN HOUSE	Date: 6/12/2015
Assembly: SOFFIT CANOPY (WALL MOUNT)	Date:
Drawn By: L.B.	Sheet: 2 OF 2
Revision:	
Scale: N.T.S.	

API Recommends that this note appear with storefront elevations and section view details in your blueprints.

Storefront and related materials provided by American Products, Inc. (API). No substitutions without written consent from store owner/
 Architect: API (813) 925-0144